

Profiler® Smoke-Rated ICU/CCU Doors with Integrated Mini-Blind Glass

Manual Door System



Swing and slide doors with UL 1784 smoke-rated label and mini-blind glass.

The new integrated mini-blind smoke-rated door system is a win-win for patients, hospital personnel, and architects. For patients, the mini-blind glass gives privacy in their most vulnerable state. For hospital personnel, the system provides adjustable light attenuation and eliminates the use of drapes reducing the risk of nosocomial infections. For architects, the smoke-rated label allows greater flexibility in ICU designs where the doors could be located on a fire-rated corridor or in a non-rated suite.

The mini-blinds are built into the glass and come with corner mounted actuation controls. The system utilizes a fire-rated panel on the lower section of the door that not only makes it easier to operate but also accommodates fire-rated square footage room requirements.* This system is tested per standard UL 1784 to meet air leakage requirements of NFPA 105.

Additional benefits include:

- Available for swing and slide doors
- Trackless floor design for unobstructed flow and expedient traffic management
- No dust or particle buildup for improved hygiene
- Positive latching handles for added safety and superior smoke seal
- Concealed high temperature weather strip and gasket design
- Magnet actuated controls

*Note: Check local codes to confirm how standards may apply in your area.



Full Open
For ongoing patient monitoring



Partial Open
For light control



Full Close
For maximum privacy and light control when needed

Did You Know?



Horton Automatics test results of .124 CFM/SQFT (Slide), and .178 CFM/SQFT (Swing) far exceeded the UL 1784 requirement of 3 CFM/SQFT.

Profiler® Smoke-Rated ICU/CCU Doors with Integrated Mini-Blind Glass

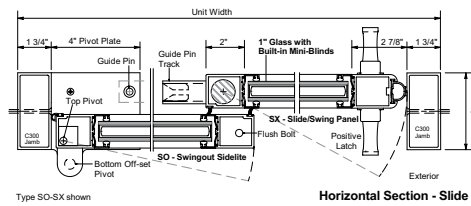
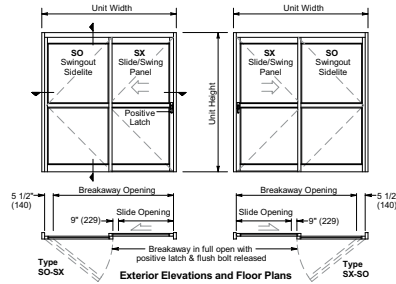
Manual Door System

The integrated smoke-rated mini-blind glass doors are available for single slide and equal/unequal swing configurations. Consult your Horton Automatics distributor for specification assistance.

Architectural Details

Type 310

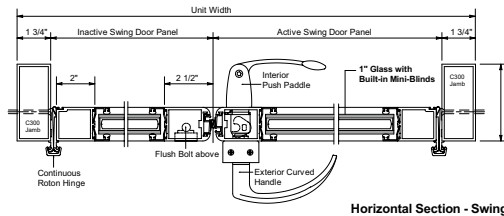
Door slides to the interior of fixed sidelites and allows largest breakout area for moving patients and equipment.



Standard Slide Packages

Unit Width	Slide Opening	Breakout Opening	Slide Panel Width	Sidelite Width	Rough Opening Width
7'-0" (2134)	2'-8 7/8" (835)	6'-3" (1905)	3'-8 3/8" (1127)	3'-2 3/8" (975)	7'-0 1/2" (2146)
8'-0" (2438)	3'-2 7/8" (987)	7'-3" (2210)	4'-2 3/8" (1280)	3'-8 3/8" (1127)	8'-0 1/2" (2451)
8'-6" (2591)	3'-5 7/8" (1063)	7'-9" (2362)	4'-5 3/8" (1356)	3'-11 3/8" (1203)	8'-6 1/2" (2604)
9'-0" (2743)	3'-8 7/8" (1140)	8'-3" (2515)	4'-8 3/8" (1432)	4'-2 3/8" (1280)	9'-0 1/2" (2756)

Unit Height: 8'-0 1/2" (2438) Rough Opening Height: 8'-0 3/4" (2457) Anodized Finish: Clear or Dark Bronze



Standard Swing Packages

Unit Width	Active Panel Width	Inactive Panel Width	Swing Opening	Rough Opening Width
5'-3 1/2" (1613)	3'-0" (914)	2'-0" (610)	4'-7" (1397)	5'-4" (1626)
5'-9 1/2" (1765)	3'-6" (1067)	2'-0" (610)	5'-1" (1549)	5'-10" (1778)
6'-3 1/2" (1918)	4'-0" (1219)	2'-0" (610)	5'-7" (1702)	6'-4" (1930)
7'-3 1/2" (2222)	4'-0" (1219)	3'-0" (914)*	6'-7" (1956)	7'-4" (2235)

Unit Height: 8'-0 1/2" (2438) Rough Opening Height: 8'-0 3/4" (2457) Anodized Finish: Clear or Dark Bronze

Optional Equal Pair: Up to 8'-3 1/2" (2527) unit width and up to 4'-0" (1219) panel width

*Custom inactive panel width up to 3'-11" (1194)

Single Slide

Other Horton ICU/CCU Door Solutions

Profiler® Self-Closing ICU Sliding Doors

- First commercially available self-closing ICU system

- Unit widths from 7' to 9'



Profiler® Smoke-Rated Telescoping ICU/CCU Door System

- Unit widths from 7' to 12'



ICU/CCU Bi-Fold/Bi-Swing® Door System

- Unit widths from 6' to 8'

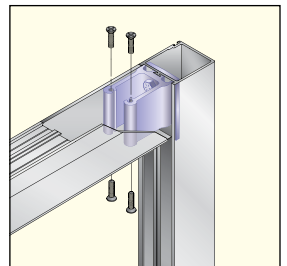


Construction



Breakout Panels

All panels break out for emergency egress.



Corner Block Design

Adding structural integrity and longevity, all ICU/CCU door panels feature the same rugged corner block construction as Horton automatic sliding doors. This mortise-style corner block construction is far superior to mass produced through-bolt panels.

Did You Know?



Horton specializes in automatic door architectural solutions.



Horton Automatics
World Headquarters
 4242 Baldwin Boulevard
 Corpus Christi, Texas 78405-3399 USA
 Phone: 800-531-3111, 361-888-5591
 Fax: 361-888-6510
www.hortondoors.com

Horton Automatics, Ltd.
United Kingdom
 Unit A, Hortonwood 31
 Telford, Shropshire, England TF1-7YZ
 Phone: 01952 670169
 Fax: 01952 670181



Overhead
 Door
 Corporation
 A Sanwa Holdings Company