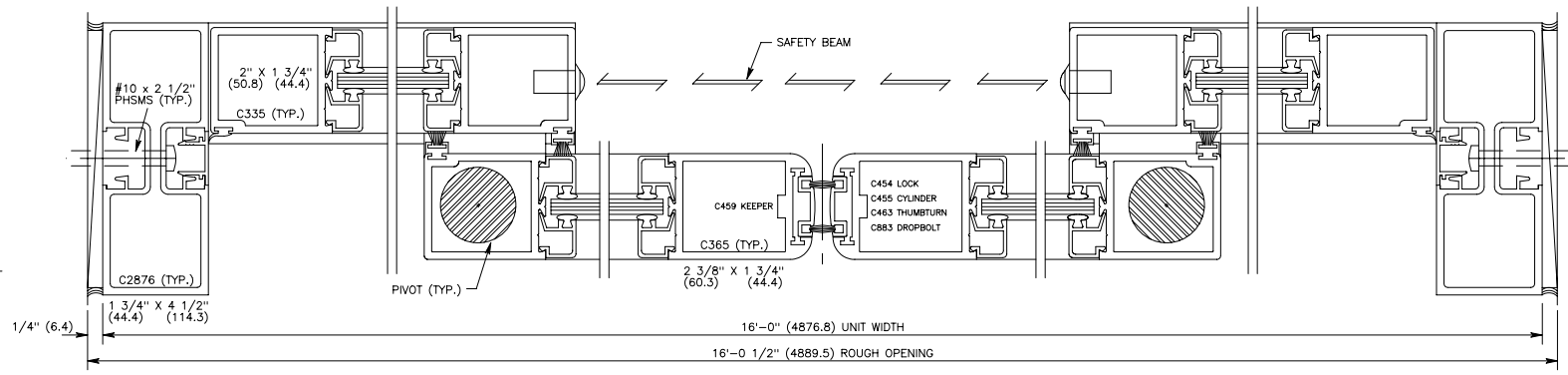
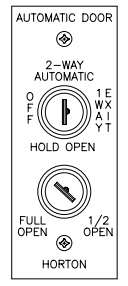


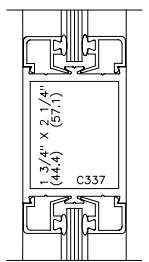
VERTICAL SECTION 1
DOOR SHOWN IN OPEN POSITION



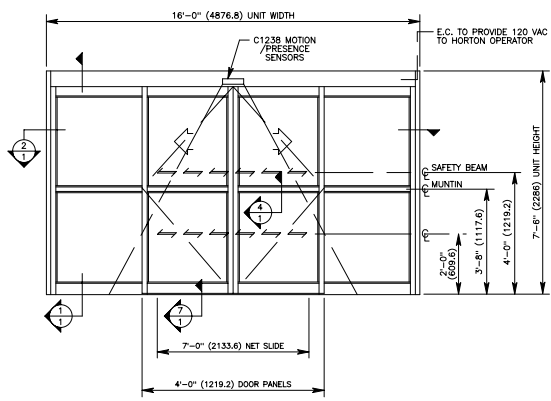
HORIZONTAL SECTION 2
1



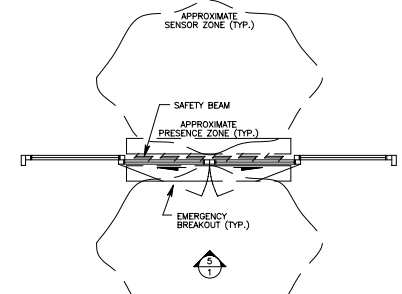
C3725 KEY SWITCH 3
FIELD MOUNTED & LOCATED



MUNTIN SECTION 4
1



ELEVATION 5
2 THUS
DR. #72, 73



FLOOR PLAN 6
1

NOTE: DIMENSIONS IN PARENTHESIS () ARE METRIC MILLIMETER EQUIVALENTS

NO.	REVISIONS DESCRIPTION	DATE

ARCHITECT:
CONTRACTOR:
SERIES: 2003/110 TYPE: O-SX-SX-O
FINISH: 204-R1 CLEAR ANODIZED
ACTUATION: C1238 MOTION/PRESENCE SENSORS, C3725 KEYSW.
ACCESSORIES: C2876 JAMBS

Horton A DIVISION OF OVERHEAD DOOR CORPORATION
1423 SHAWNEE HILLS DRIVE
CORPUS CHRISTI, TEXAS 78405-3399
TEL: 361-888-5581 1-800-531-3111
FAX: 361-888-6510, 1-800-531-3108
http://www.hortondoors.com

JOB: COSTCO
LOCATION:
DISTRIBUTOR:
TWN: P.O. # SHEET 1 of 3
CHK: DATE: REVISION: