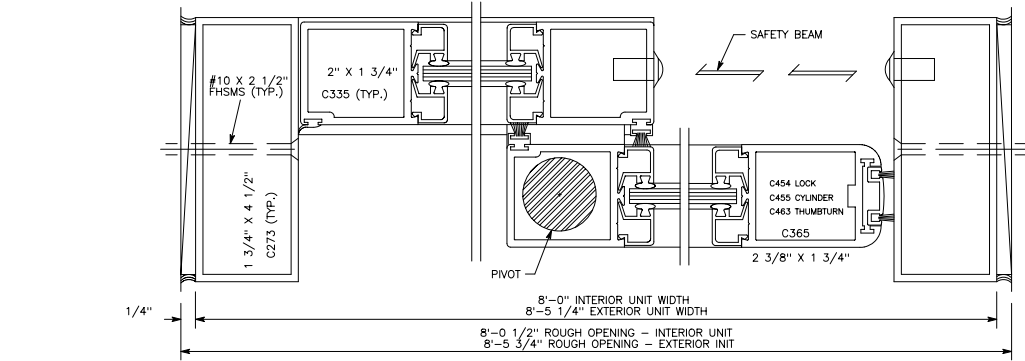
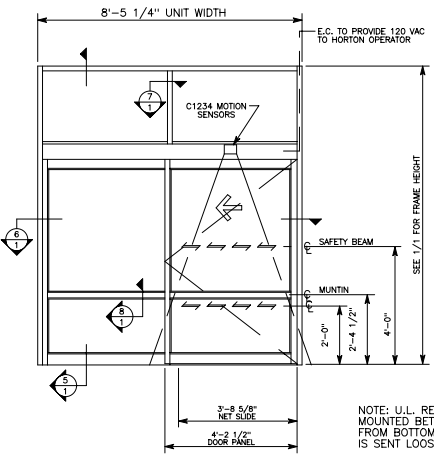
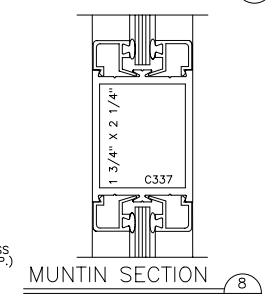
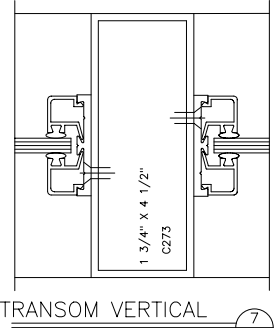


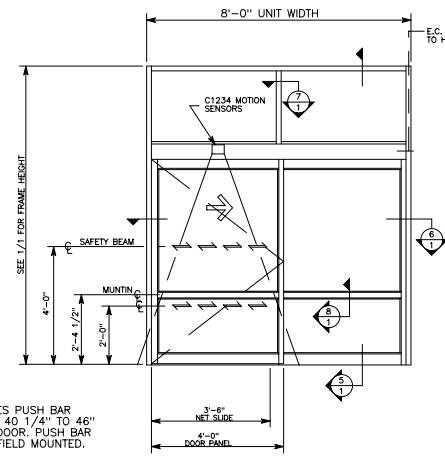
VERTICAL SECTION 5
 DOOR SHOWN IN OPEN POSITION 1



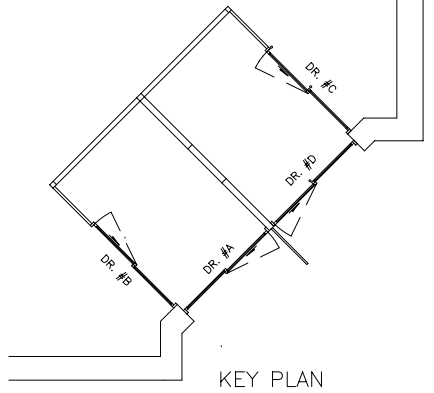
HORIZONTAL SECTION 6
 1



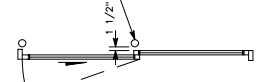
FLOOR PLAN - EXTERIOR 1
 1



FLOOR PLAN - EXTERIOR 3
 1



BUMPER POST - SET POST SO RUBBER BUMPER RINGS ARE 1 1/2" FROM INSIDE FACE OF FIXED SIDELITE FRAME AND PROJECT 1" INTO DOOR OPENING (WHEN FULLY OPEN). -VERIFY SIZE AND LOCATION WITH OWNER.



PACKAGE LIST DR. #A & #B

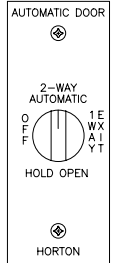
QTY:	DESCRIPTION
1	SERIES 2003 AUTOMATIC SLIDING DOOR Size: 8'-5 1/4" Wide x 7'-6" High-Door #A 8'-5 1/4" Wide x 7'-6" High-Door #B Type: O-SX Stile: Narrow
1	TRANSOM WITH 1 VERTICAL
2	C337 2 1/4" HORIZONTAL MUNTIN
2	4" BOTTOM RAIL
1	C3726-1 ROTARY SWITCH
2	C1234 OPTEX MOTION SENSORS
2	C1192 SAFETY BEAMS

PACKAGE LIST DR. #C & #D

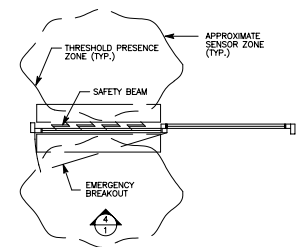
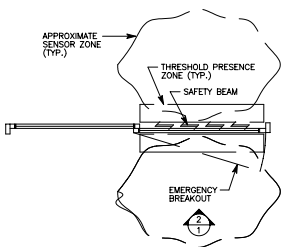
QTY:	DESCRIPTION
1	SERIES 2003 AUTOMATIC SLIDING DOOR Size: 8'-0" Wide x 7'-6" High-Door #C 8'-5 1/4" Wide x 7'-6" High-Door #D Type: SX-O Stile: Narrow
1	TRANSOM WITH 1 VERTICAL
2	C337 2 1/4" HORIZONTAL MUNTIN
2	4" BOTTOM RAIL
1	C4320-1 ROCKER SWITCH
2	C1234 OPTEX MOTION SENSORS
2	C1192 SAFETY BEAMS

Please Complete/Verify the Following:

PACKAGE QUANTITY:
 ROUGH OPENING(S): 313-R1 DARK BRZ. ANOD.
 204-R1 CLEAR ANODIZED
 INSTALLATION DATE REQUIRED:
 JOB SUPERINTENDENT:
 JOBSITE PHONE:



C3726-1 ROTARY SWITCH 9
 FIELD MOUNTED ON SIDELITE CLOSEST TO JAMB TUBE, 6'-0" ABOVE FINISH FLOOR 1



A DIVISION OF OVERHEAD DOOR CORPORATION

Horton

4242 Bolgin Boulevard
 Corpus Christi, Texas 78405-3399
 512-888-5591
 800-531-3111
 Fax: 512-888-6510
 Fax: 800-531-3108
 http://www.hortondoors.com

A.U.T.O.M.A.T.I.C.S.

JOB NAME: ALDI'S

LOCATION:
 DISTRIBUTOR:
 GEN. CONTRACTOR:
 INVOICE NO.:
 CUSTOMER ORDER NO.:
 DATE: SHEET 1 of 1 Revision: -