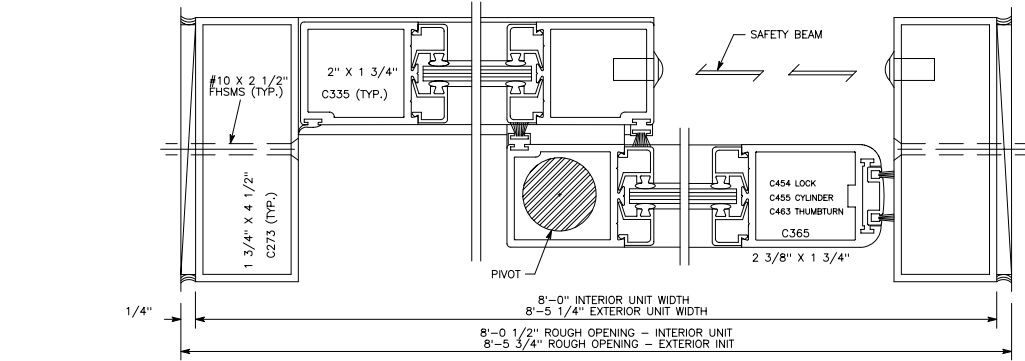
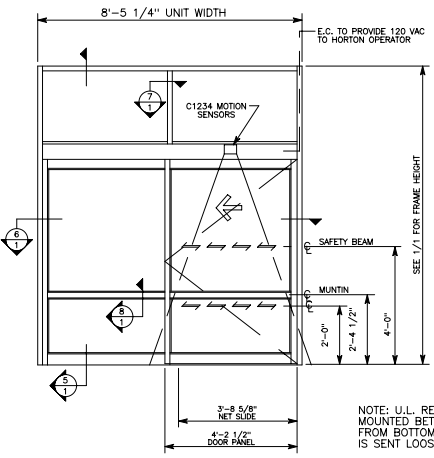
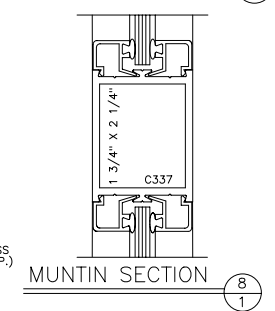
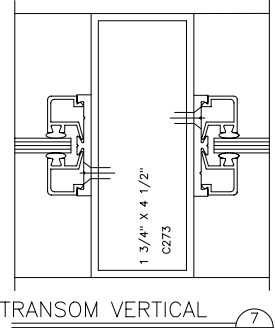


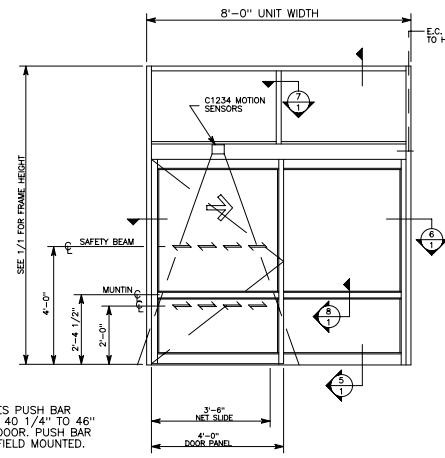
VERTICAL SECTION 5  
 1



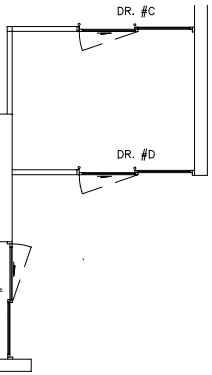
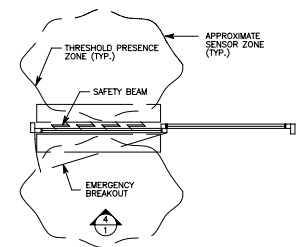
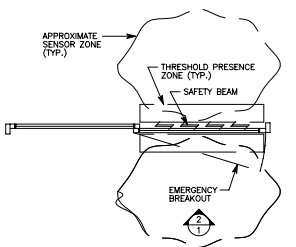
HORIZONTAL SECTION 6  
 1



1 THUS DOOR #A  
 1 OPPOSITE DOOR #D

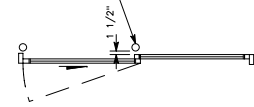


1 THUS DOOR #C  
 1 OPPOSITE DOOR #B



KEY PLAN

BUMPER POST - SET POST SO RUBBER BUMPER RINGS ARE 1 1/2" FROM INSIDE FACE OF FIXED SIDELITE FRAME AND PROJECT 1" INTO DOOR OPENING (WHEN FULLY OPEN). -VERIFY SIZE AND LOCATION WITH OWNER.



PACKAGE LIST DR. #A & #B

QTY:	DESCRIPTION
1	SERIES 2003 AUTOMATIC SLIDING DOOR Size: 8'-5 1/4" Wide x 7'-6" High-Door #A 8'-5 1/4" Wide x 7'-6" High-Door #B Type: 0-SX Stile: Narrow
1	TRANSOM WITH 1 VERTICAL
2	C337 2 1/4" HORIZONTAL MUNTIN
2	4" BOTTOM RAIL
1	C3726-1 ROTARY SWITCH
2	C1234 OPTEX MOTION SENSORS
2	C1192 SAFETY BEAMS

PACKAGE LIST DR. #C & #D

QTY:	DESCRIPTION
1	SERIES 2003 AUTOMATIC SLIDING DOOR Size: 8'-0" Wide x 7'-6" High-Door #C 8'-5 1/4" Wide x 7'-6" High-Door #D Type: SX-0 Stile: Narrow
1	TRANSOM WITH 1 VERTICAL
2	C337 2 1/4" HORIZONTAL MUNTIN
2	4" BOTTOM RAIL
1	C4320-1 ROCKER SWITCH
2	C1234 OPTEX MOTION SENSORS
2	C1192 SAFETY BEAMS

Please Complete/Verify the Following:

PACKAGE QUANTITY:  
 ROUGH OPENING(S):  313-R1 DARK BRZ. ANOD.  
 204-R1 CLEAR ANODIZED

INSTALLATION DATE REQUIRED:  
 JOB SUPERINTENDENT:  
 JOBSITE PHONE:

A DIVISION OF OVERHEAD DOOR CORPORATION  
 4242 Bolgain Boulevard  
 Corpus Christi, Texas 78405-3399  
**Horton**  
 A U.S. & A. I. S. S.  
 http://www.hortondoors.com

JOB NAME: ALDI'S  
 LOCATION:  
 DISTRIBUTOR:  
 GEN. CONTRACTOR:  
 INVOICE NO.:  
 CUSTOMER ORDER NO.:  
 DATE: SHEET 1 of 1 Revision: -