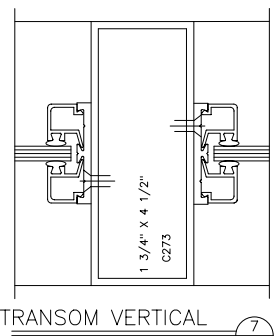
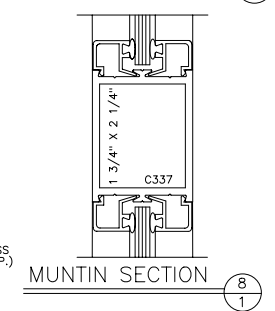


**VERTICAL SECTION** 5  
DOOR SHOWN IN OPEN POSITION 1

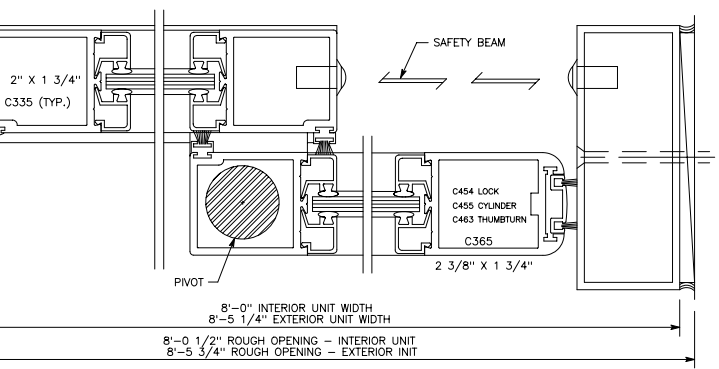
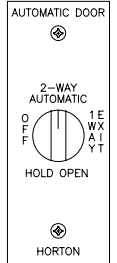
**C3726-1 ROTARY SWITCH** 9  
FIELD MOUNTED ON SIDELITE CLOSEST TO JAMB TUBE, 6'-0" ABOVE FINISH FLOOR 1



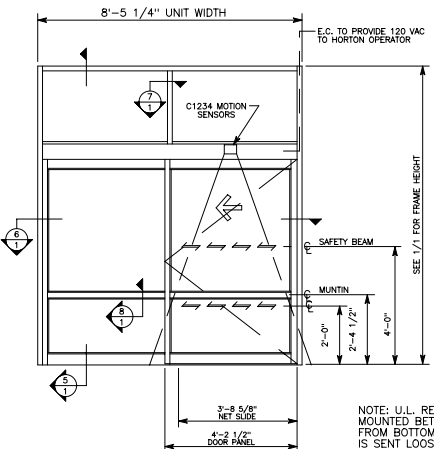
**TRANSOM VERTICAL** 7  
1



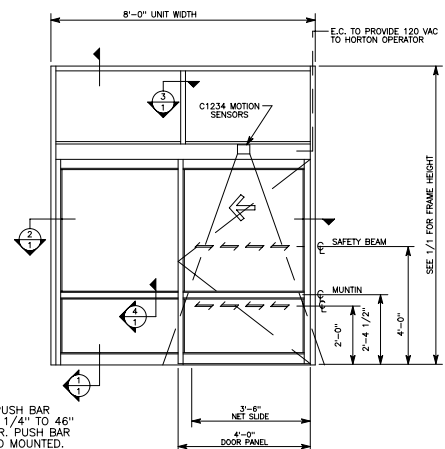
**MUNTIN SECTION** 8  
1



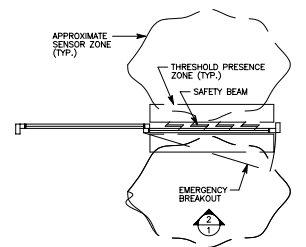
**HORIZONTAL SECTION** 6  
1



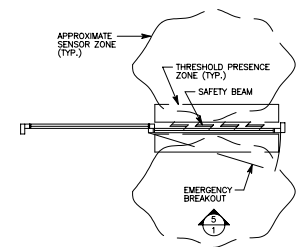
**ELEVATION - EXTERIOR** 2  
1  
1 THUS DOOR #D  
1 OPPOSITE DOOR #A



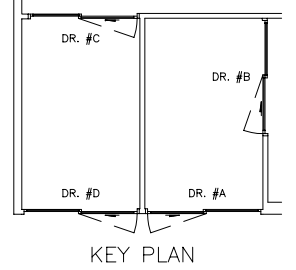
**ELEVATION - INTERIOR** 2  
1  
2 THUS DOOR #B & #C



**FLOOR PLAN - EXTERIOR** 1  
1

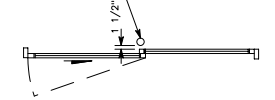


**FLOOR PLAN - EXTERIOR** 3  
1



**KEY PLAN**

BUMPER POST - SET POST SO RUBBER BUMPER RINGS ARE 1 1/2" FROM INSIDE FACE OF FIXED SIDELITE FRAME AND PROJECT 1" INTO DOOR OPENING (WHEN FULLY OPEN). -VERIFY SIZE AND LOCATION WITH OWNER.



**BUMPER POST AT EXIT DOORS**

**PACKAGE LIST DR. #D**

QTY:	DESCRIPTION
1	SERIES 2003 AUTOMATIC SLIDING DOOR Size: 8'-5 1/4" Wide x 7'-6" High Type: 0-SX Stile: Narrow
1	TRANSOM WITH 1 VERTICAL
2	C337 2 1/4" HORIZONTAL MUNTIN
2	4" BOTTOM RAIL
1	C3726-1 ROTARY SWITCH
2	C1234 OPTEX MOTION SENSORS
2	C1192 SAFETY BEAMS

**PACKAGE LIST DR. #A, B, C**

QTY:	DESCRIPTION
1	SERIES 2003 AUTOMATIC SLIDING DOOR Size: 8'-0" Wide x 7'-6" High-Door B & C 8'-5 1/4" Wide x 7'-6" High-Door A Type: SX-0 Stile: Narrow
1	TRANSOM WITH 1 VERTICAL
2	C337 2 1/4" HORIZONTAL MUNTIN
2	4" BOTTOM RAIL
1	C4320-1 ROCKER SWITCH
2	C1234 OPTEX MOTION SENSORS
2	C1192 SAFETY BEAMS

Please Complete/Verify the Following:

PACKAGE QUANTITY:  
ROUGH OPENING(S):  
FINISH (SELECT ONE):  313-R1 DARK BRZ. ANOD.  
 204-R1 CLEAR ANODIZED  
INSTALLATION DATE REQUIRED:  
JOB SUPERINTENDENT:  
JOBSITE PHONE:

**Horton** A DIVISION OF OVERHEAD DOOR CORPORATION  
4242 Bolgin Boulevard  
Corpus Christi, Texas 78405-3399  
512-888-5991  
800-531-3111  
512-888-6510  
800-531-3108  
http://www.hortondoors.com

JOB NAME: **ALDI'S**  
LOCATION:  
DISTRIBUTOR:  
GEN. CONTRACTOR:  
INVOICE NO.:  
CUSTOMER ORDER NO.:  
DATE: SHEET 1 of 1 | Revision: -