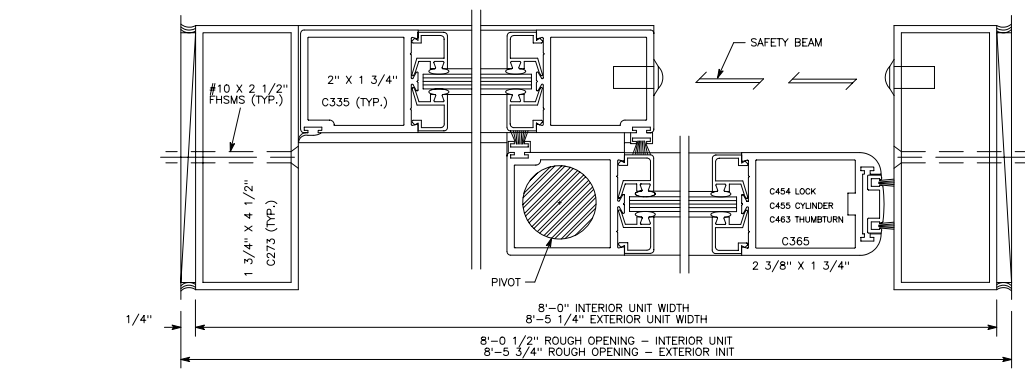
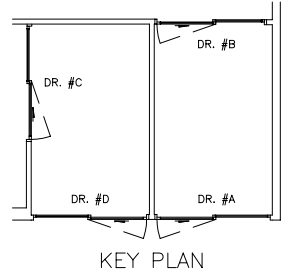


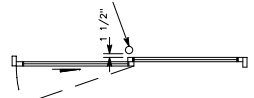
VERTICAL SECTION 5  
 1



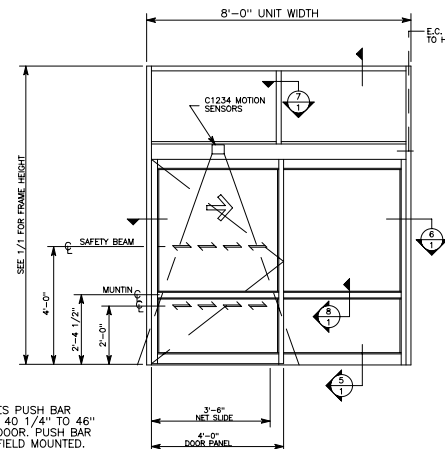
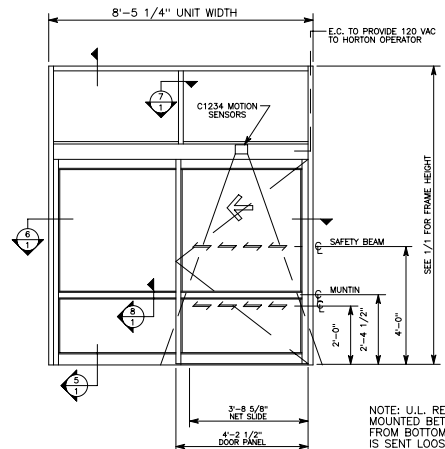
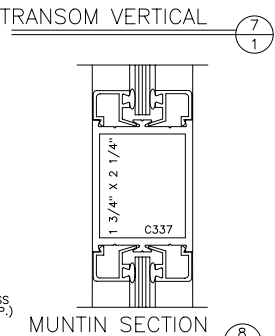
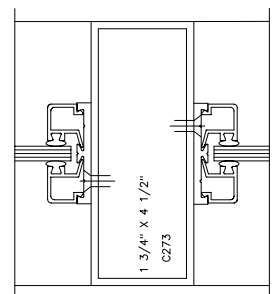
HORIZONTAL SECTION 6  
 1



BUMPER POST - SET POST SO RUBBER BUMPER RINGS ARE 1 1/2" FROM INSIDE FACE OF FIXED SIDELITE FRAME AND PROJECT 1" INTO DOOR OPENING (WHEN FULLY OPEN). VERIFY SIZE AND LOCATION WITH OWNER.

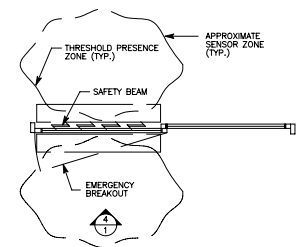
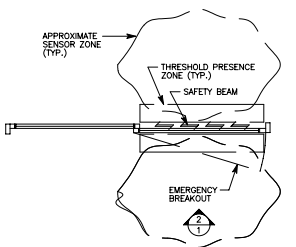


BUMPER POST AT EXIT DOORS



FLOOR PLAN - EXTERIOR 1  
 1

FLOOR PLAN - EXTERIOR 3  
 1



PACKAGE LIST DR. #D

QTY:	DESCRIPTION
1	SERIES 2003 AUTOMATIC SLIDING DOOR Size: 8'-5 1/4" Wide x 7'-6" High Type: 0-SX Stile: Narrow
1	TRANSOM WITH 1 VERTICAL
2	C337 2 1/4" HORIZONTAL MUNTIN
2	4" BOTTOM RAIL
1	C3726-1 ROTARY SWITCH
2	C1234 OPTEX MOTION SENSORS
2	C1192 SAFETY BEAMS

PACKAGE LIST DR. #A, B, C

QTY:	DESCRIPTION
1	SERIES 2003 AUTOMATIC SLIDING DOOR Size: 8'-0" Wide x 7'-6" High-Door B & C 8'-5 1/4" Wide x 7'-6" High-Door A Type: SX-0 Stile: Narrow
1	TRANSOM WITH 1 VERTICAL
2	C337 2 1/4" HORIZONTAL MUNTIN
2	4" BOTTOM RAIL
1	C4320-1 ROCKER SWITCH
2	C1234 OPTEX MOTION SENSORS
2	C1192 SAFETY BEAMS

Please Complete/Verify the Following:

PACKAGE QUANTITY:

ROUGH OPENING(S):

FINISH (SELECT ONE):  313-R1 DARK BRZ. ANOD.  204-R1 CLEAR ANODIZED

INSTALLATION DATE REQUIRED:

JOB SUPERINTENDENT:

JOB SITE PHONE:

A DIVISION OF OVERHEAD DOOR CORPORATION

**Horton**

4242 Bolgoin Boulevard  
 Corpus Christi, Texas 78405-3399  
 512-888-5991  
 800-531-3111  
 Fax: 512-888-6510  
 Fax: 800-531-3108  
 http://www.hortondoors.com

A.U.T.O.M.A.T.I.C.S.

JOB NAME: ALDI'S

LOCATION:

DISTRIBUTOR:

GEN. CONTRACTOR:

INVOICE NO.:

CUSTOMER ORDER NO.:

DATE: SHEET 1 of 1 Revision: -