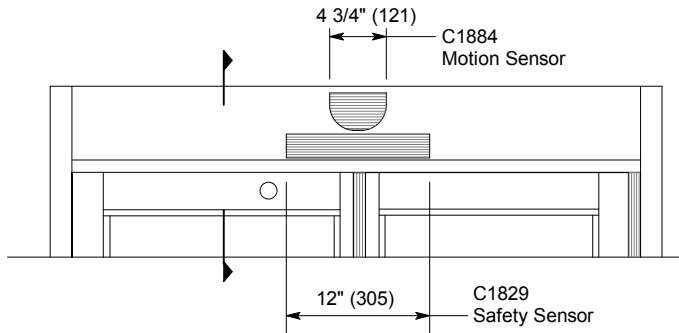
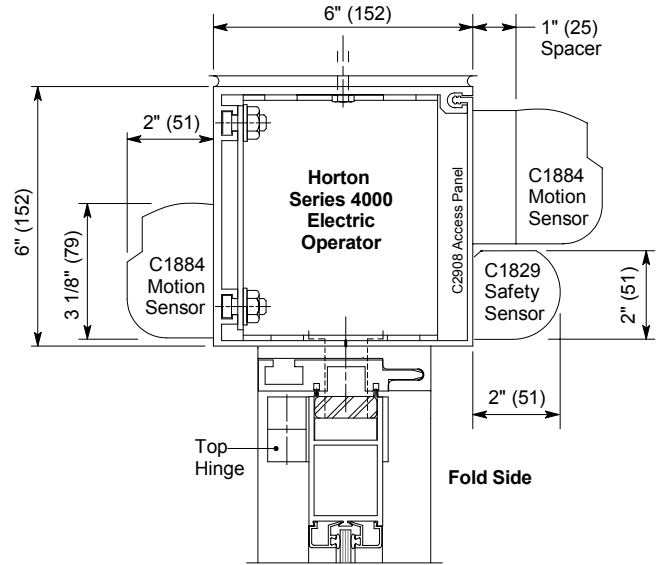


Standard Packages

- Activation sensors: C1884 Microwave motion sensor mounted on both sides of header. On fold side, spacer is provided to mount the sensor slightly away from the door.
- Safety sensor: C1829 active infrared sensor mounted on fold side of header. Sensor shall keep a closed door from opening or an open door from closing when safety zone (fold side) is occupied. When door is in open position the fold side safety sensor shall provide threshold protection covering the full width of the door way overlapping into activating zone.



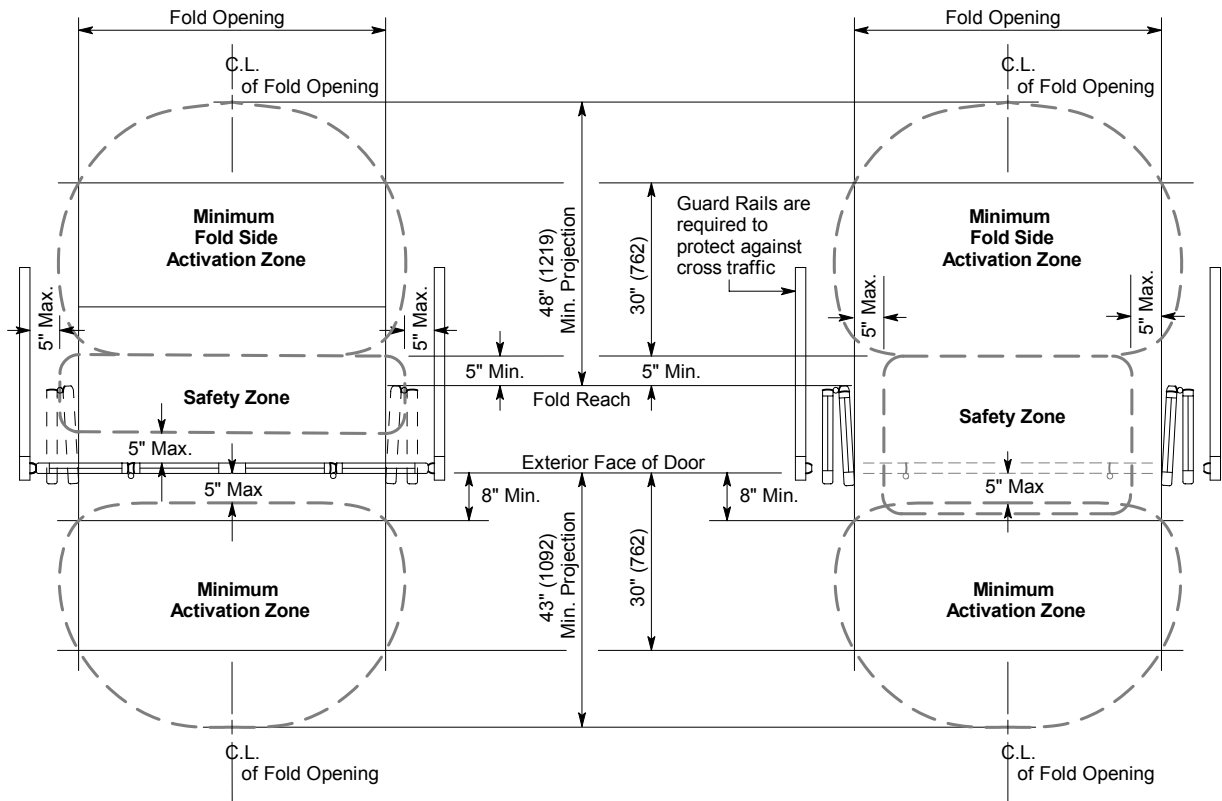
Fold Side Elevation



Vertical Section

2-Way Traffic Motion & Safety Zones

The following general information is provided as a recommendation for safe operation.
 Note: Pairs are shown. Singles have similar layouts.



Zones with Door Closed

Zones with Door Open