

Profiler[®] Smoke-Rated Telescoping ICU/CCU Manual Door System



Widest access plus smoke protection

The first smoke-rated ICU/CCU door system offered in a telescoping design, this Horton door technology introduces a wider range of architectural options and greatly enhances accessibility for moving patient beds and medical equipment. With its telescoping function and full break-out capability, the door package can provide up to 80 inches of clear opening width in a full 12-foot system. For the ultimate in patient safety, this system **exceeds smoke protection standards UL 1784 and NFPA 105.**

Additional benefits include:

- Up to 78% greater opening width than standard smoke-rated single sliding ICU doors
- Custom sizes for door openings ranging from 7' to 12' with unlimited finish options
- Track or trackless design
- Low profile header for superior design appeal
- Positive latching handles for added safety and superior smoke seal
- Concealed high temperature weather strip and gasket design



Smoke-Rated



Unobstructed Traffic



Ultimate Choice for Patient Care

Maximizing the accessible opening width while offering **full interlock seals** for smoke protection, this ICU/CCU door system sets a new standard for **patient safety.** The system is available in 7-ft to 12-ft widths for new installation or remodeling.

Sliding Door Systems

Profiler® Smoke-Rated Telescoping ICU/CCU

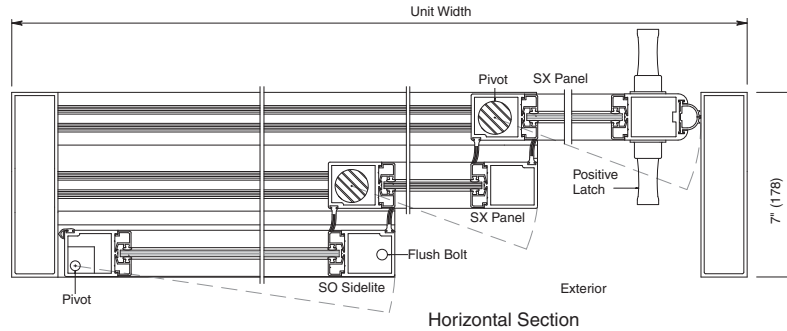
Manual Door System

The 310T series door system is designed specifically for the critical care environments of ICU/CCU operations. Patients are in full view when doors are closed. Two moving panels slide open smoothly with one-hand operation providing wide clearance for beds and equipment.

Architectural Details

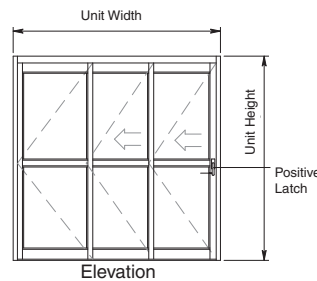
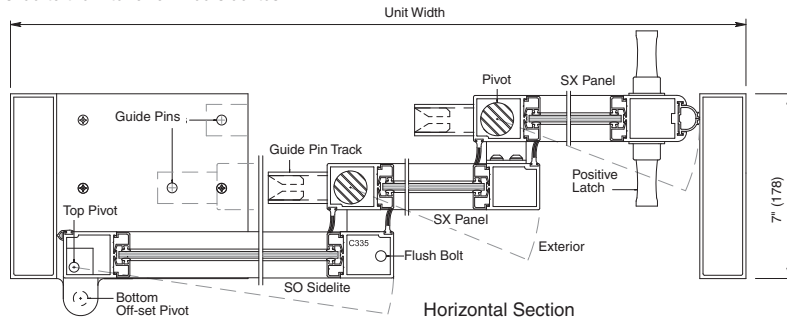
Type 310T Track

(allows larger breakout area for moving wide objects)
Doors slide to the interior of fixed sidelites.



Type 310T Trackless

(allows larger breakout area for moving wide objects)
Doors slide to the interior of fixed sidelites.



Selection Guide

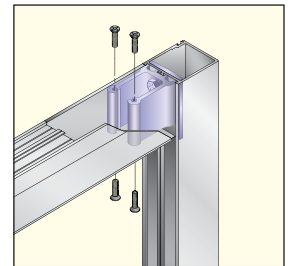
Model	Type	Unit Width	Max. Slide Opening	Breakout Opening
Smoke-Rated Telescoping ICU/CCU	Single Slide	7' to 12'	3' 4-1/4" to 6' 8-1/4"	6' 1" to 11' 1"

Construction



Breakout Panels

All panels break out for emergency egress.



Corner Block Design

Adding structural integrity and longevity, all ICU/CCU door panels feature the same rugged corner block construction as Horton automatic sliding doors. This mortise-style corner block construction is far superior to mass produced through-bolt panels.

Other Horton Smoke-Rated ICU Door Solutions

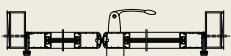
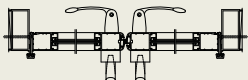
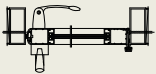
Profiler-ICU® Sliding Door System

- Single slide, 7' to 9' widths
- Trackless or recessed track configurations



SmokeSwing™ Doors

- Single, equal or unequal pairs up to 48" door width
- No center Muntin Bar required



Horton Automatics
World Headquarters
4242 Baldwin Boulevard
Corpus Christi, Texas 78405-3399 USA
Phone: 800-531-3111, 361-888-5591
Fax: 361-888-6510
www.hortondoors.com

Horton Automatics, Ltd.
United Kingdom
Unit A, Hortonwood 31
Telford, Shropshire, England TF1-7YZ
Phone: 01952 670169
Fax: 01952 670181



A Division of
Overhead Door Corporation
A Sanwa Shutter Company