

Profiler[®] Self-Closing, Smoke-Rated ICU

Manual Door System with Fully-Concealed, Self-Closing Device



The first self-closing smoke-rated ICU with no power needed

Horton continues to set the standard for healthcare solutions with the first fully-concealed, full breakout self-closing ICU door system. The self-closing, smoke-rated ICU door easily opens like a regular ICU door and self-closes without user intervention. The system includes a hold open device at the full open position and allows for traditional full breakout for moving patients and equipment. Systems can be fitted with a magnetic hold-open device tied to the fire alarm system that will close the door if an alarm is triggered.

Additional benefits include:

- No power needed to operate door
- Full breakout capability
- Track or trackless design
- Available for openings ranging from 7' to 9'
- Low closing forces from 6–8 lbs. and opening forces up to 12 pounds
- Adjustable hydraulic damper ensures that door does not slam
- Hold open feature
- Fully-concealed, self-closing device
- Available for non-smoke rated applications
- Tested to UL1784 and meets the air infiltration requirements of NFPA 105



Specify Horton and demand AAADM certified installation

AAADM American Association of Automatic Door Manufacturers



Self-Closing

With adjustable hydraulic damper spring force



Manual Opening

With hold-open feature and hands-free closing



Slim Line Header

Sleek 4" x 6" profile



Positive Latch

Provides added smoke seal for smoke-tight door system compliance

Sliding Door Systems

Profiler® Self-Closing, Smoke-Rated ICU

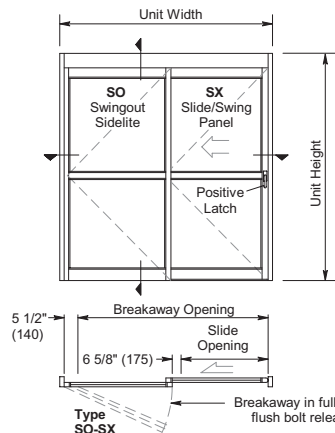
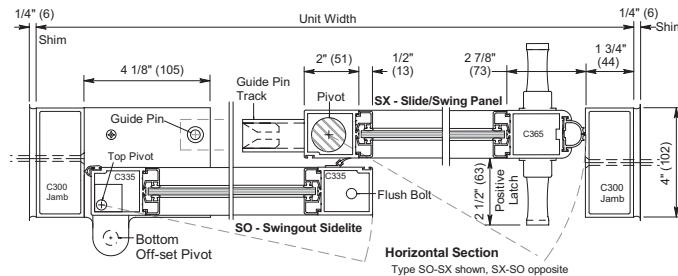
Manual Door System

The first commercially available fully-concealed, full breakout, self-closing, smoke-rated ICU system for healthcare applications. Available for rough opening sizes from 7' to 9'.

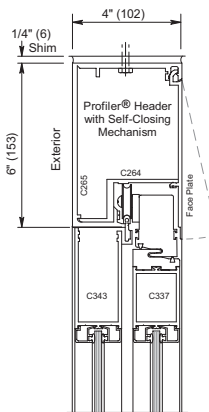
Architectural Details

Type 310

Door slides to the interior of fixed sidelites and allows largest breakout area for moving patients and equipment.



Exterior Elevation and Floor Plan



Header Vertical Section

Selection Guide

Model	Type	Unit Width	Positive Latch Slide Opening	Breakout Opening
Profiler®	310	7' 0"	2' 8-7/8"	6' 3"
Self-Closing, Smoke-Rated ICU	Single Slide	8' 0"	3' 2-7/8"	7' 3"
		9' 0"	3' 8-7/8"	8' 3"

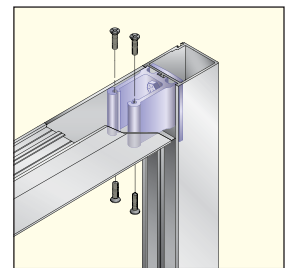
Standard Unit Height: 7' 6"

Construction



Breakout Panels

All panels break out for emergency egress.



Corner Block Design

Adding structural integrity and longevity, all ICU/CCU door panels feature the same rugged corner block construction as Horton automatic sliding doors. This mortise-style corner block construction is far superior to mass produced through-bolt panels.

Did You Know?



More and more states are writing laws that require self-closing doors in hospitals.

Specify **HORTON**



A Division of
Overhead Door Corporation
A Sanwa Shutter Company

Other Horton ICU/CCU Door Solutions

Profiler-ICU® Manual Sliding Doors

- Unit widths from 7' to 14'

Profiler® Smoke-Rated Telescoping ICU/CCU Door System

- Unit widths from 7' to 12'



ICU/CCU Bi-Fold/Bi-Swing® Door System

- Unit widths from 6' to 8'



Horton Automatics
World Headquarters
4242 Baldwin Boulevard
Corpus Christi, Texas 78405-3399 USA
Phone: 800-531-3111, 361-888-5591
Fax: 361-888-6510
www.hortondoors.com

Horton Automatics, Ltd.
United Kingdom
Unit A, Hortonwood 31
Telford, Shropshire, England TF1-7YZ
Phone: 01952 670169
Fax: 01952 670181