

ICU/CCU Bi-Fold/Bi-Swing™ Door System

Manual Door System



Two door systems in one for standard and wide access

Our newest addition to the extensive Horton Automatics selection of healthcare door systems, the ICU/CCU Bi-Fold/Bi-Swing™ system represents a unique pairing of functions for hospital efficiency. The Bi-Swing door provides convenient access from either side for staff as they check on patients. For extra opening width when moving patients or medical equipment, the adjacent Bi-Fold door can be opened along with the Bi-Swing door providing up to 6 ft 8 inches of total clearance. The entire system is provided as an integral package with common header and frame.

Standard system features include:

- Trackless floor design for unobstructed flow and expedient traffic management
- Low profile 2-3/4" header for aesthetic appeal
- Choice of fold-in or fold-out Bi-Fold panels with center pull
- Hydraulic closer and pull handle for swing door panel
- Choice of narrow, medium and wide stile rails



Bi-Swing Door

opens conveniently in both directions for normal traffic



Bi-Fold Door

creates additional clearance for patient and equipment moves (fold-in unit shown)



Unobstructed Access

trackless floor; all panels open



Fully Closed Doors

provide a quiet environment for the patient and clear monitoring for the staff

Swing & Folding Door Systems

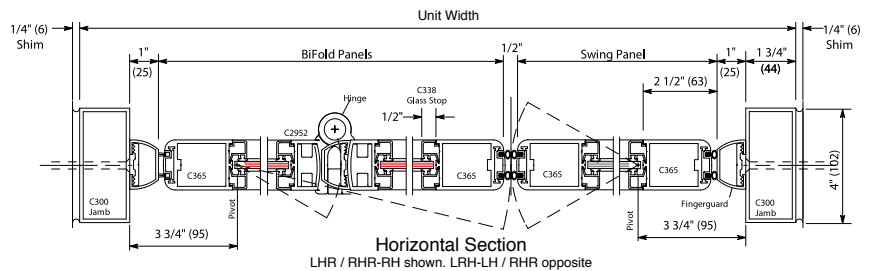
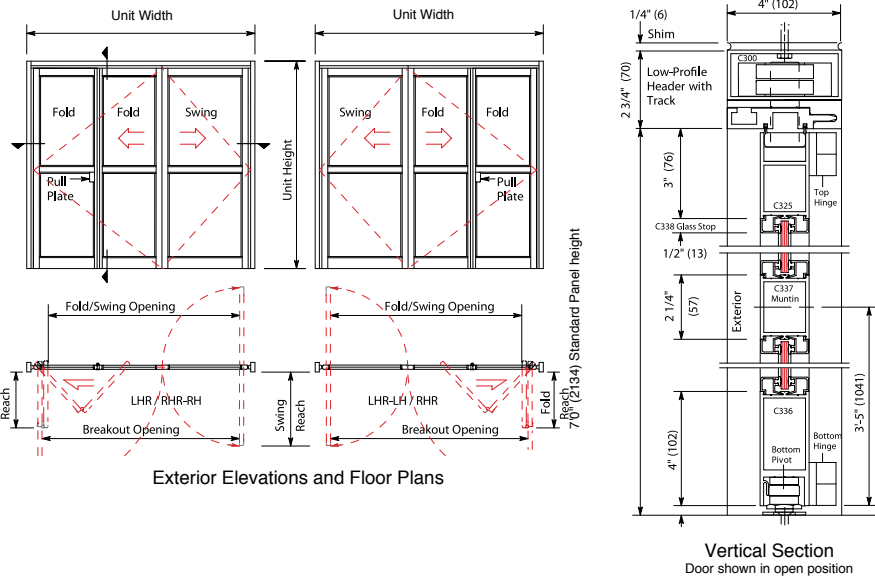
ICU/CCU Bi-Fold/Bi-Swing™ Door System

Manual Door System

Available for rough opening sizes from 6'-0 1/2" to 8'-0 1/2", this unique dual-function door system offers versatile access along with the rugged dependability of Horton engineering.



Architectural Details



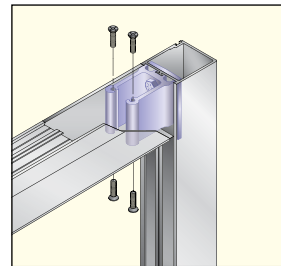
Selection Guide					
Unit Width	Bi-Fold Panels Width	Bi-Fold Panels Reach	Fold/Swing Opening	Breakout Opening	Rough Opening Width
6'-0" (1829)	2'-6" (752)	1'-0" (305)	4'-8" (1422)	4'-11" (1499)	6'-0 1/2" (1842)
7'-0" (2134)	3'-6" (1067)	1'-3" (381)	5'-8" (1727)	5'-11" (1803)	7'-0 1/2" (2146)
8'-0" (2438)	4'-6" (1372)	1'-6" (457)	6'-8" (2032)	6'-11" (2108)	8'-0 1/2" (2451)

Unit Height: 7'-1 3/4" (2178), **Rough Opening Height:** 7'-2" (2184)
Swing Panel Width: 36" (914), **Swing Reach:** 2'-7" (787)
Glazing: Standard unit prepped for 1/4" (6) glazing with up to 1" available.*
 *65 lb. weight limitation per individual leaf

Construction



Breakout Panels
All panels break out fully for unobstructed access.



Corner Block Design
Adding structural integrity and longevity, all ICU/CCU door panels feature the same rugged corner block construction as Horton automatic sliding doors. This mortise-style corner block construction is far superior to mass produced through-bolt panels.

Other Horton ICU/CCU Door Solutions

Profiler® Smoke-Rated Telescoping ICU/CCU Door System

- Unit widths range from 7' to 12'
- Exceeds smoke protection standards UL 1784 and NFPA 105



Smoke-Rated ICU/CCU Doors with Mini-Blind Glass

- Available in single slide, single swing, and equal/unequal pair packages
- Magnet activated



Horton Automatics
World Headquarters
 4242 Baldwin Boulevard
 Corpus Christi, Texas 78405-3399 USA
 Phone: 800-531-3111, 361-888-5591
 Fax: 361-888-6510
www.hortondoors.com

Horton Automatics, Ltd.
United Kingdom
 Unit A, Hortonwood 31
 Telford, Shropshire, England TF1-7YZ
 Phone: 01952 670169
 Fax: 01952 670181



Overhead Door Corporation
 A Sanwa Holdings Company