



® 4242 Baldwin Boulevard  
 Corpus Christi, Texas  
 USA 78405-3399  
 Tel: 800-531-3111, 361-888-5591  
 Fax: 800-531-3108, 361-888-6510  
 www.hortondoors.com  
 The Automatic Choice

# ARCHITECTURAL DETAILS

## AUTOMATIC COMMERCIAL SLIDE DOORS

HD-Slide® Series 2500 Elegant®

A4.16

Type: 010 Single Slide O-X or X-O

July 17

### Standard Packages

Unit Width	Slide Opening	Slide Panel Width	Sidelite Width	Rough Opening Width
7'-0" (2134)	3'-1 3/4" (959)	3' - 4 1/4" (1022)	3'-6 3/4" (1086)	7'-0 1/2" (2146)
8'-0" (2438)	3'-7 3/4" (1111)	3'-10 1/4" (1175)	4'-0 3/4" (1238)	8'-0 1/2" (2451)
9'-0" (2743)	4'-1 3/4" (1264)	4' - 4 1/4" (1321)	4'-6 3/4" (1391)	9'-0 1/2" (2756)

<b>Unit Height:</b> 7'-8" (2337)	<b>Rough Opening Height:</b> 7'-8 1/4" (2350)	<b>Anodized Finish:</b> Clear or Dark Bronze
<b>Glazing:</b> Standard unit provided with 1/2" (6) clear tempered glass.		
<b>Threshold:</b> 1/2" (13) tall x 4" wide (See page A5.3).		

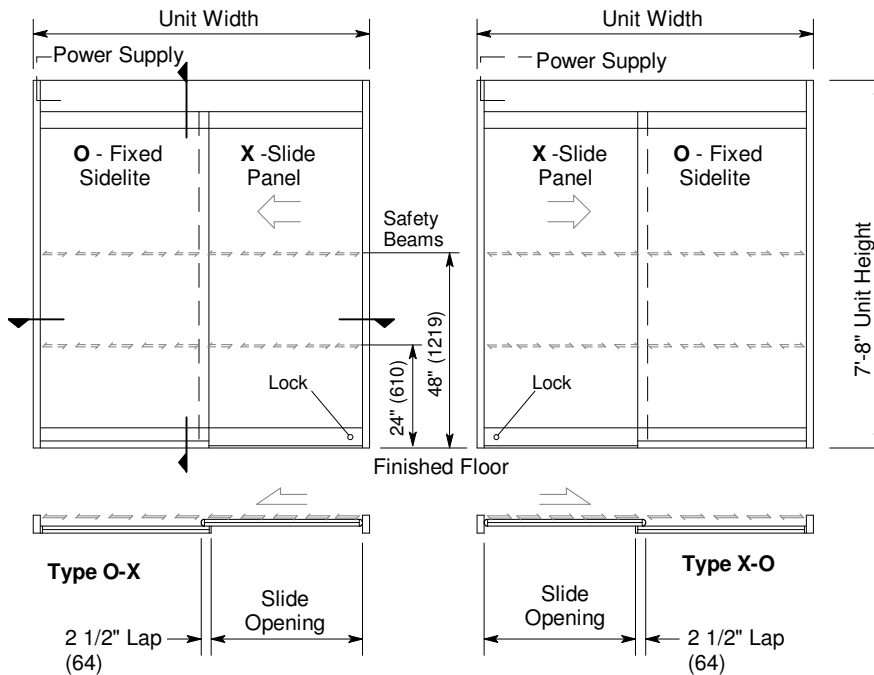
### Options

- Custom unit widths between 7'-0" & 9'-0".
- Custom bottom rails and jambs.
- Tinted Grey or Bronze glass.
- Transom or extra wide sidelite.
- Custom anodized or paint finish or stainless steel cladding

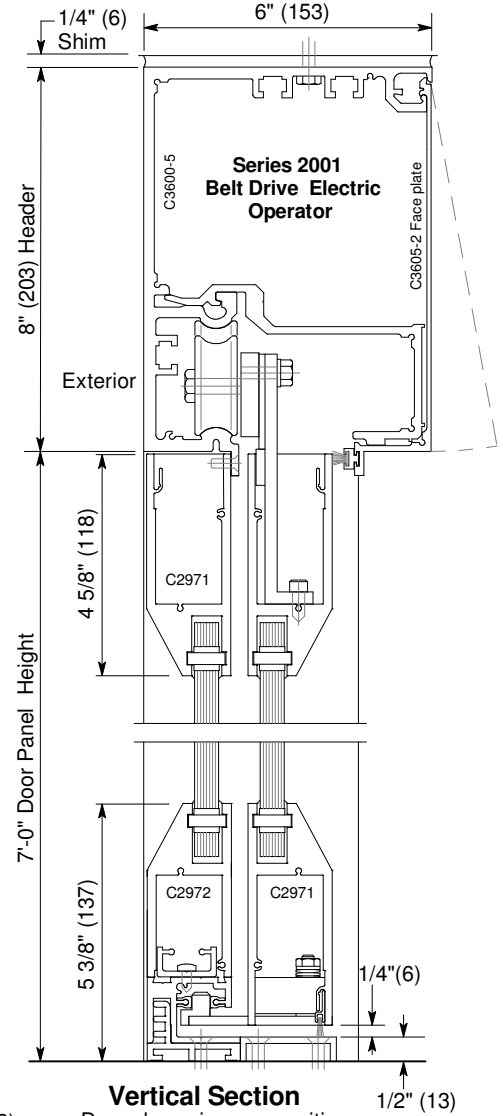
See Architectural Specifications on p. A8e.0 and Specification Details starting on p. A5.0.

### Installation and Operation

- Door perimeter mounted within rough opening with 1/4" minimum shim space at header & jambs. Finish floor not to exceed 1/4" out of level. (See page A.3)
- Electrical: Provide 120 VAC, 60 cycle, single phase, 15 amp service (in conduit) to each unit on dedicated 20 amp circuit breaker routed to header. Maximum current draw is 3.15 amps.
- Door actuated with header mounted motion sensor at interior and exterior for detection of traffic in each direction. Door closes after time delay expires. (See page A.4)
- Manual Locking: Exterior keylock into threshold provided at bottom rail. (Optional fail-safe or fail-secure autolock)

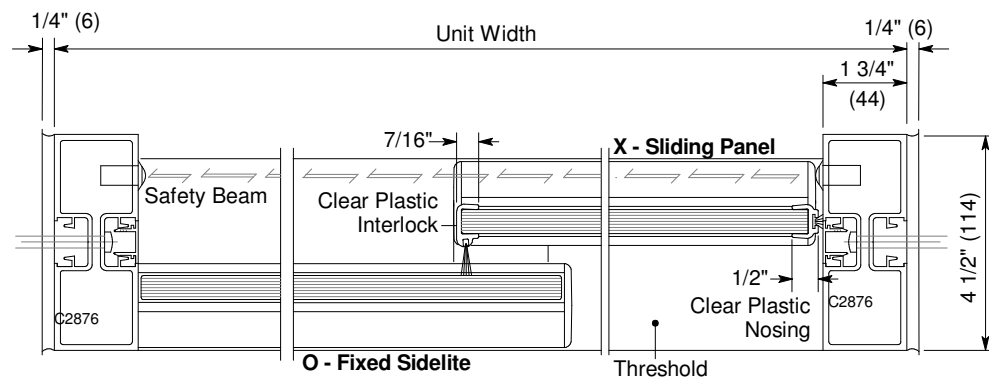


Exterior Elevations and Floor Plans



Vertical Section

Door shown in open position



Horizontal Section

Type O-X shown, X-O opposite

Horton Automatics reserves the right to improve the product and change its specifications without notice. Dimensions given in U.S. inches followed by millimeters in parenthesis.